



K-900 Battery Load Banks

---Customized for all industries

K-900 is Kongter's updated battery load bank. It includes a series customized load bank models that feature unique state-of-art design and excellent performance. They facilitate your work for DC load and battery capacity testing. Kongter offers various load bank models to cover a wide voltage range from 12V to 480V nominal voltages with current up to 600A. They are applied for users from various industries including telecom, power utility, data center, fork lift and others. With its optional CDL (Cell Data Logger), discharge values of EACH cell could be monitored on the load bank screen and PC simultaneously by using the Kongter's data view software.

Our Advantages

- 1) K-900 has different customized models to meet requirement of customers from various industries exactly.
- 2) Its optional data loggers enable a wireless communication with computer. And it will monitor the whole process of discharge including voltage of EACH cell.
- 3) Standard discharge function and other functions like assistant discharge, parallel load, external load, charge monitor. Compatible with non-Kongter load banks.
- 4) Rugged, reliable and durable with very good price.

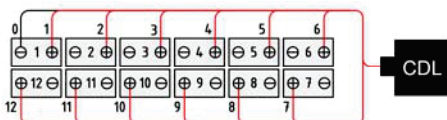
Features

- ◆ Touch screen with easy and user-friendly data setting and operation
- ◆ Optional wireless CDL enables real-time PC monitor during measurement
- ◆ It sets 4 conditions for discharge auto shut-down:
Discharge time, discharge capacity, string voltage and cell voltage
- ◆ Continued discharge available when previous discharge is stop abnormally
- ◆ Discharge data adjustable during battery discharge
- ◆ Parallel connection of up to 5 units for higher discharge current
- ◆ Assistant discharge to add load to even non-Kongter load banks
- ◆ Can monitor measurement of other load banks or battery charger
- ◆ Accurate data measurement and vivid waveforms of PC software
- ◆ Autosorting of lag-out batteries during discharge
- ◆ Powerful management software for data analysis and report generation
- ◆ Automatic protection upon over-heating and overload

Optional CDL (Cell Data Logger)



Connection with all cell types:



Optional Cell Data Logger (CDL)

Each CDL is recording voltage of up to 12 cells for all cell types (1.2V, 2V, 6V and 12V). It has wireless communication with K-900 main unit and PC. Kongter also offers customized CDL for non-standard battery types. CDL numbers are easily expandable to cover more battery volumes.

CDL can work with SDL (String Data Logger) without load bank for monitoring of cell voltage, string voltage, temperature and current in the same software.

Its Connection:

One CDL is connected with 12 cells of 1.2V, 2V, 6V or 12V. Therefore, different battery systems will require different amount of CDLs.

Composition:

Standard parts:

- ◆ Main unit of load bank
- ◆ Data View software
- ◆ Carrying case (for small & medium size models)
- ◆ Set of 3m/10ft load cables
- ◆ 3m/10ft voltage test leads
- ◆ Grounding cable
- ◆ AC Power cord
- ◆ USB with backup info
- ◆ Antenna

Optional:

- ◆ CDL package
- ◆ Current clamp for external loads

Technical Parameters

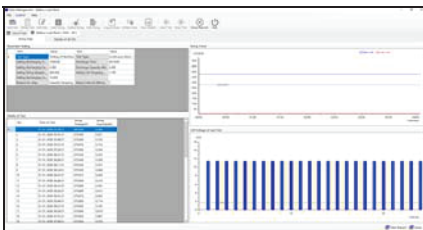
Power supply	1) AC 220V/110V, 50/60Hz; 2) DC (from batteries, optional for some models)
Cell type	1) Standard: 2V, 6V and 12V 2) Customized: 1.2V or other uncommon cell types.
Discharge voltage range	10V-552V Customized as nominal voltages of 12V, 24V, 48V, 72V, 80V, 110V, 120V, 220V, 240V, 380V and 480V.
Discharge current range	Single load bank: 10A-600A Parallel load: 10A-3000A (up to 5 loads) Current is customer-tailored per different string voltage
Accuracy	Current: 1% Voltage: 0.5% – 0.8%
Resolution	Current: 0.1 A or 0.5% Voltage: 0.001 V
Sampling Interval	5s – 1min
Discharge pattern	Constant current discharge
Display	128*64 pixel, 5" TFT touch screen
CDL power supply	10~90V DC
CDL measurement range	0~15V DC
Data transfer	USB, Wifi (for CDL to load bank and PC)
Cooling	Forced air
Operation Temperature	0°C~40°C (32 – 104 °F)
Humidity	5%~90% Relative humidity
Standard	CE marking, EMC standard
Main Unit Dimension ²	S: 400 x 177 x 288 mm (15.7 x 7 x 11.3 in) M: 520 x 202 x 355 mm (20.5 x 8 x 14 in) L: 555 x 225 x 435 mm (22.5 x 8.9 x 17.2 in) XL: 603 x 400 x 740 mm (23.7 x 15.7 x 29 in) XXL: 762 x 406 x 737 mm (30 x 16 x 29 in)
Main unit Weight	S: 11 kg (24 lbs) M: 16 kg (36 lbs) L: 21 kg (47 lbs) XL: 42 kg (93 lbs) XXL: 55 kg (122 lbs)

Note:

- 1) Quantity of CDL and cable in standard CDL package are based on 2V, 6V and 12V. For measurement of 1.2V Ni-cd batteries, you will require some more CDLs and relevant cables.
- 2) Measurement range, dimension and weight vary depending on different models. Please confirm with our sales representative upon orders.

Kongter PC Software

All standard load units of K-900 come with PC software. With the software, you could have a real-time data monitor for the whole process of discharge, analyze the measurement data and easily print out the complete report. Same software is also compatible for other battery test equipment of Kongter.



K-900 PC Software

Order Information

Kongter offers many customized models of battery load bank to fit almost all users of different industries. For telecom, power, forklift and other industries, we have the regular models of load bank as below. If you do not find the right model, please kindly contact our sales representative with your detailed requirement.

Load Bank Model	Code	Maximal Discharge Current (Amp) at:								
		12V	24V	36V	48V	80V	125V	240V	380V	480V
24V-300A	DLB-2430	--	300	--	--	--	--	--	--	--
24/36/48V-300A	DLB-2343	150	300	300	300	--	--	--	--	--
24/36/48/72/80V 200A (12V-80V, 0- 200A)	DLB-2348	100	200	200	200	200	--	--	--	--
24/48V-200A	DLB-2482	--	200	--	200	--	--	--	--	--
48V-150A	DLB-4815	--	--	--	150	--	--	--	--	--
48V-300A	DLB-4830	--	--	--	300	--	--	--	--	--
48V-400A	DLB-4840	--	--	--	400	--	--	--	--	--
48V-500A	DLB-4850	125	250	375	500	--	--	--	--	--
48V-600A	DLB-4860	150	300	450	600	--	--	--	--	--
48/125V*-100A	DLB-4811	25	50	75	100	64	100	--	--	--
48/125V-200A	DLB-4812	50	100	150	200	128	200	--	--	--
48/125V-300A	DLB-4813	75	150	225	300	192	300	--	--	--
48/240V*-100A	DLB-4821	25	50	75	100	33	52	100	--	--
48 200A/240V 150A (12-240V, 0-200A)	DLB-2415	50	100	150	200	50	78	150	--	--
80V-100A	DLB-8010	15	30	45	60	100	--	--	--	--
80V-200A	DLB-8020	30	60	90	120	200	--	--	--	--
125V-100A	DLB-1110	--	--	--	--	--	100	--	--	--
125V-200A	DLB-1120	19	38	57	77	128	200	--	--	--
125V-300A	DLB-1130	28	57	86	115	192	300	--	--	--
125V-400A	DLB-1140	38	76	115	153	256	400	--	--	--
125V-500A	DLB-1150	--	96	144	192	320	500	--	--	--
125/240V-100A	DLB-1121	--	19	28	38	64	100	100	--	--
125/240V-150A	DLB-1215	14	28	43	57	96	150	150	--	--
240V-150A	DLB-2215	--	15	22	30	50	78	150	--	--
240V-200A	DLB-2220	--	20	30	40	66	104	200	--	--
380V-50A	DLB-3850	--	--	--	--	--	--	--	50	--
380V-100A	DLB-3810	--	--	--	--	--	--	--	100	--
480V-100A	DLB-4810	--	--	--	10	16.6	26	50	79	100

NOTE*: Per different countries' requirement in power utility, we use either 110V or 125V, 220V or 240V.